



NetVanta 834T

Four-Port, SHDSL EFM Ethernet NTU

Product Features

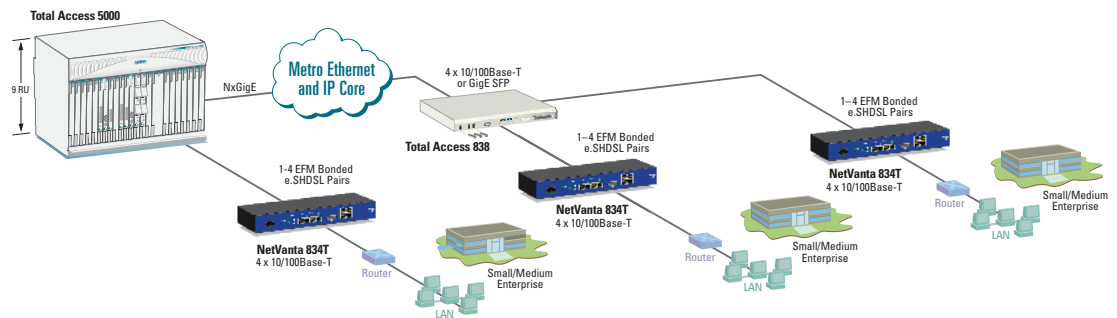
- Supports Carrier Ethernet services over Copper
- MEF 9/14 certified supporting standard Ethernet OAM
- Enhanced SHDSL data rate performance up to 15 Mbps per loop (60 Mbps symmetrical total)
- Auto-failover and recovery for improved service robustness
- Symmetrical data transfer rates for upstream/downstream VLAN Management
- Plug-and-play auto line detection for easy installation
- Autosensing 10/100Base-T Ethernet
- Small Form-factor Pluggable (SFP) 1000Base-X Ethernet
- Spectral compatibility for robust operation alongside other DSL services
- Supports Terminal and Facility MAC-Swap Loopback to validate service turn up and trouble-shooting
- Firmware upgrades through the LTU
- AC power supply
- Deskmount and rackmount options

The NetVanta® 834T is a Carrier Ethernet Network Termination Unit (NTU) that terminates up to four e.SHDSL copper pairs. Four 10/100 Ethernet ports are provided for customer use. The NetVanta 834T is designed for cost-effective deployment of voice and data services to small- and medium-sized businesses, bandwidth indoors of up to 60 Mbps. However, typical deployments using outside plant copper for extended distances will be closer to an 8 Mbps service offering. The NetVanta 834T is designed for LAN, WAN and Metro Ethernet extension as well as supporting Voice over IP (VoIP) applications with voice, video and data traffic. Enterprise customers, as well as integrated communications providers like CLECs, ILECs and ISPs, will benefit from this intuitive, easy to install, plug-and-play unit. A key feature of this unit is auto line detection, which enables synchronization with data rates from 192 Kbps to 15 Mbps without operator intervention.

In the event that a single loop fails, the NetVanta 834T will continue to operate on the remaining loop, providing additional resiliency. Once the failed loop is operational again, the NetVanta 834T will automatically detect its availability and will auto-recover to the original configuration.

The EIA-232 craft port enables local access for configuration and status information. The SHDSL Ethernet over Copper provides carriers a management channel to remotely configure and collect status information.

The compact design provides safety and reliability required for customer premises installations. It can be wall or rack mounted depending on customer preference. When wall mounted, the NetVanta 834T only occupies an eight-inch by 12-inch area of the customer's telephone wiring closet. For rack mount installations, custom 19-inch rackmount shelves are available.





ADTRAN, Inc.

901 Explorer Boulevard
Huntsville, AL 35806

P.O. Box 140000
Huntsville, AL 35814-4000

256 963-8000
256 963-8030 fax

General Information

800 9ADTRAN
info@adtran.com
www.adtran.com

Pre-Sales

Technical Support

888 423-8726
application.engineer@adtran.com
www.adtran.com/presales

Where to Buy

888 423-8726
www.adtran.com/where2buy

Post-Sales

Technical Support

888 423-8726
support@adtran.com
www.adtran.com/support

Regional Offices

Dallas, TX
972 830-9070
Denver, CO
303 471-9150
Kansas City, KS
800 471-8649
Newark, NJ
800 471-8656
Ontario, Canada
416 290-0585
Quebec, Canada
877 923-8726
San Antonio, TX
888 223-7671

Global Inquiries

256 963-8000
256 963-6300 fax
www.adtran.com/support
international@adtran.com

ADTRAN believes the information in this publication to be accurate as of publication date, and is not responsible for error. Specifications subject to change without notice. ADTRAN and NetVanta are registered trademarks of ADTRAN, Inc. and its affiliates in various countries. All other trademarks mentioned in this document are the property of their respective owners.

ADTRAN warranty duration and entitlements vary by product and geography. For specific warranty information, visit www.adtran.com/warranty

ADTRAN products may be subject to U.S. export controls and other trade restrictions. Any export, re-export, or transfer of the products contrary to law is prohibited. For more information regarding ADTRAN's export license, please visit www.adtran.com/exportlicense



TL191270



ADTRAN is an ISO 9001, ISO 14001, and a TL 9000 certified supplier.

61172834G1-8C January
Copyright © 2013 ADTRAN, Inc.
All rights reserved.

NetVanta 834T

Four-Port, SHDSL EFM Ethernet NTU



Physical Interface

Network Interface

- RJ-21 e.SHDSL

Client Interface

- Four Autosensing 10/100Base-T Ethernet
 - RJ-45
 - Auto MDI/MDIX
 - Auto-Rate
 - Auto-Duplex
- All Ethernet ports may be used for either network WAN or customer-side LAN connections

Management: Console Port

- DB-9
- EIA-232

Diagnostics LEDs

- Power/Alarm LED
- Ethernet LED
- SHDSL Loop Status for Each Loop

Environment

- **Operating Temperature:** -40 to +149F (-40 C to +65C)
- **Storage Temperature:** -40 to +185F (-40C to +85 C)
- **Relative Humidity:** Up to 95%, Non-condensing
- **Dimensions:** 1.75 in. x 12 in. x 8 in. (H x W x D)
(44 mm x 305 mm x 204 mm)
- **Weight:** 4 lbs (1.8 kg)
- **AC Power:** Universal power supply 100 - 240 VAC, 50/60 Hz
- **Power Dissipation:** 11 watts maximum

Physical Specifications

DSL Features

- Variable rate bonding for the SHDSL loops
- Auto-failover and recovery
- Plug-and-play auto-line detection
- ITU-G.991.2-2003, Annex A&B-SHDSL

Ethernet Features

- IEEE 802.1p priority marking
- IEEE 802.1d dynamic/transparent bridging
- IEEE 802.1Q VLAN tagging
- IEEE 802.3u Ethernet
- MEF 9/14 certified EPL, EVPL, ELAN

Ethernet Services Support

- Priority queuing of traffic based on VLAN priority
 - Supports eight class of service queues
 - Per UNI port, CE VLAN ID (C-Tag) and/or CE VLAN P-bits, DSCP fields
- Single stack VLAN and double stack VLANs (Q-in-Q)
 - Manipulation based on 802.1p and DSCP fields
 - STAG TPID provisioning supports 802.1ad and 802.1Q standards
 - Port-based service support
- Services Scale and Flexibility

- MEF 9, 14 compliant EPL, EVPL, ELAN
- Configurable EtherType and TPID for service flexibility
- VLAN IDs 0-4095; EVC configurable in the range of 2-4094
- Configurable MTU from Mini Jumbo frame support (1700 Bytes)
- 16k active MAC address; Ability to disable MAC learning (32k support future software)
- Ingress policers (tr3CM), CIR and EIR settings to 64 kbps granularity, Configurable Burst through EBS, CBS settings
- Egress shaping per port (per port per queue and per up to 16 VLAN groups in future)
- Resources
 - 64 EVCs
 - 64 EVC Maps
 - 64 Policers
 - 4 EFM Group

Fault and Performance Management

- IEEE 802.3ah EFM standard
- ITU-T Y.1731 CFM, PM
- Supports OAM management status and loopback messaging
- Supports Terminal and Facility MAC-Swap Loopback

Management and Administration

- Management Methods
 - Craft interface (Local, EIA-232)
 - Firmware upgrades
 - SNMP proxy via TA838 LTU, TA1400S series and TA5000
 - Local: YMODEM through craft port
 - Remote: Managed through TA838 LTU, TA1400S series and TA5000

Regulatory Agency Approvals

- FCC Part 15 Class A
- FCC Part 68
- UL 60950, CAN/CSA C22.2 No. 60950
- EN 60950, IEC 60950, AS 3260/ AS NZS60950
- NEBS Level 3
- S043.2
- ITU-T K21:2000 Basic

Ordering Information

Equipment	Part #
NetVanta 834T US Power	1172834G1
NetVanta 19-inch Rackmount Install Kit	1172984G1
NetVanta 23-inch Rackmount Install Kit	1172985G1