



TSU ESP

T1/FT1 DSU/CSU with SNMP

Product Features

- Single V.35 DTE interface
- Nx56 or Nx64 operation
- Embedded SNMP and Telnet
- Control port provides SLIP access to SNMP or VT100 terminal configuration
- Two ESP option slots
- 10Base-T Ethernet port available with ESP Ethernet Card
- Optional ESP DBU cards include 4-wire SW56, Single BRI and External DCE
- Automatic or manual dial backup
- Time of Day and Weekend dial backup lockout options
- Support for T-Watch PRO software for optional PC-based configuration
- Industry-leading five-year North American warranty

The ADTRAN® TSU ESP™ is a full-featured T1-FT1 Data Service Unit/Channel Service Unit (DSU/CSU) with an integral SNMP Agent and optional, modular Dial Backup (DBU) capabilities. It provides an interface between T1 or Fractional T1 service and the customer's Data Terminal Equipment (DTE). The TSU ESP provides access to traditional dedicated point-to-point T1 circuits as well as Frame Relay services.

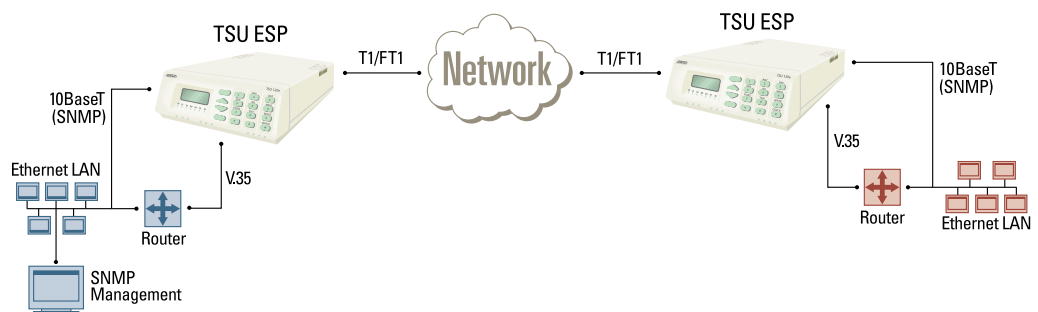
The TSU ESP supports synchronous data rates from 56 kbps to 1.536 Mbps at Nx56 or Nx64 kbps. A single V.35 physical interface provides a connection to the end user's DTE.

Embedded SNMP and Telnet are available through the integral SLIP or an optional 10Base-T Ethernet port when configured with the plug-in ESP Ethernet Card. Through the Management Information Base (MIB)-II standard and an ADTRAN-supplied enterprise MIB, the TSU ESP can be configured and monitored using standard SNMP network management programs such as HP OpenView®, Netview® and SunNet® Manager.

The Dial Backup capability of the TSU ESP allows for automatic switched backup in the event of a dedicated T1 line failure. The Dial Backup is accomplished through a family of

plug-in ESP DBU cards. Several versions of ESP DBU cards are available including 4-wire Switched 56, 2B+D ISDN, and External DCE. When a failure condition occurs on the T1/FT1, the DBU card uses the switched network (ISDN, 4-wire Switched 56) or DTR dialing (External DCE) to initiate a call to the remote end. The user can choose whether the unit automatically or manually reverts to the dedicated circuit when it is restored. Optional Weekend and Time of Day Dial Backup lockout options are provided in the TSU ESP DBU option menu.

The TSU ESP responds to standard loopback commands from the telephone company central office. In addition, the user has several built-in test capabilities. These include V.54 remote loopback and 511 BERT test patterns. Complete unit control and configuration are available through a 16-key pad and a two-line, 16 character LCD display. A VT100 terminal configuration and control mode is also available through the control port. Optional Windows®-based PC management is available through the T-Watch PRO™ software package. Flash download capability is implemented for installation of new features and future enhancements.





ADTRAN, Inc.

Attn: Enterprise Networks
901 Explorer Boulevard
Huntsville, AL 35806

P.O. Box 140000
Huntsville, AL 35814-4000

256 963-8000 voice
256 963-8699 fax
256 963-8200 fax back

General Information
800 9ADTRAN
info@adtran.com
www.adtran.com

**Pre-Sales
Technical Support**

800 615-1176 toll-free
application.engineer@adtran.com
www.adtran.com/support

Where to Buy

877 280-8416 toll-free
channel.sales@adtran.com
www.adtran.com/where2buy

**Post-Sales
Technical Support**

888 423-8726
support@adtran.com
www.adtran.com/support

**ACES Installation &
Maintenance Service**

888 874-ACES
aces@adtran.com
www.adtran.com/support

International Inquiries

256 963 8000 voice
256 963-6300 fax
international@adtran.com
www.adtran.com/international

**For the regional office
nearest you, visit:**

www.adtran.com/where2buy



ADTRAN is an
ISO 9001: 2000 certified supplier.



ADTRAN is a
TL 9000 3.0 certified supplier.

61200169L1-8G June 2002
Copyright © 2004 ADTRAN, Inc.
All rights reserved.

TSU ESP

T1/FT1 DSU/CSU with SNMP

Product Specifications

Network Interface

- **Line Rate:** T1/FT1 (1.544 Mbps)

Physical Interface

- **RJ-48C:** 8-pin modular

Framing

- SF/ESF

ESF Format

- AT&T 54016
- ANSI T1.403

Line Code

- AMI/B8ZS

Input Signal

- 0 to -36dB

DSO Assignment

- Contiguous
- Alternating

T1 Transmit Timing

- Loop timed
- Internal
- DTE

DTE Interface

- **Bit Rate:** 56 kbps to 1.536 Mbps, Nx56 or Nx64 kbps (N=1 to 24)

Electrical

- CCITT V.35

Mechanical

- V.35 (Winchester Type 34 pin)

SNMP & Telnet Integrated

- **SLIP Port:** Physical Connector RJ-48S

ESP Slots

- Optional 10Base-T interface with ESP Ethernet module
- Optional dial backup with ESP Dial Backup modules

Performance Monitor

- **Performance Data:** BPVs/CRCs, ES, SES, UAS, % AS, % EFSEC, Alarms, Errors

Reports

- NI information stored for past 24 hours in 15 minute increments

PRMS

- ANSI performance report messages (user selectable)

Tests

- **Local:** Payload/line loopback, DTE loopback
- **Remote:** Payload/line loopback, V.54 (DTE) loopback
- CSU loopback

Built-In Test Patterns

- 511 (active DSOs) with error insert available
- All 1s (all DSOs)
- All 0s (all DSOs)

Agency Approvals

- FCC part 15, Class A, FCC Part 68, Industry Canada CS03, UL 1950, CUL

Environment

Operating Temperature

- 0 to 50°C, (32 to 122°F)

Storage Temperature

- -20 to 70°C, (-4 to 158°F)

Relative Humidity

- Up to 95%, non-condensing

Physical

- **Dimensions:** 2.4" H, 8" W, 10.4" D
- **Weight:** 4 lbs.
- **Power:** 115 vAC, 60 Hz, 5W

Product Includes

- Two 8-pin to 8-pin modular cables, modular to female DB-9 adapter, and user manual

Ordering Information

| Equipment | Part # |
|---------------------------------|-----------|
| TSU ESP | 1200169L1 |
| ESP Ethernet Card | 1204005L1 |
| ESP 4-wire Switched 56 DBU Card | 1204001L1 |
| ESP ISDN DBU Card | 1204004L1 |
| ESP External DCE DBU Card | 1204006L1 |



TSU ESP Back

Specifications subject to change without notice. T-Watch PRO and TSU ESP are trademarks of ADTRAN, Inc. ADTRAN is a registered trademark of ADTRAN, Inc. HP OpenView is a registered trademark of Hewlett Packard Company. NetView is a registered trademark of IBM Corporation. SunNet Manager is a registered trademark of Sun Microsystems, Inc. Windows is a registered trademark of Microsoft Corporation. All registered trademarks and trademarks mentioned in this publication are the property of their respective owners.